

Your Personalised Jaguar

# JAGUAR F-PACE

F-PACE S Ingenium 2,0 litre 4-cylinder 250PS Turbocharged Petrol (Automatic) All Wheel Drive

JAGUAR



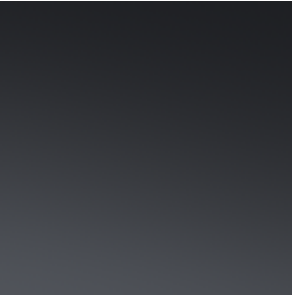


# EXTERIOR



## EXTERIOR FEATURES

|                 |  |
|-----------------|--|
| EXTERIOR COLOUR | Santorini Black  |
| COLOUR TONE     | Gloss finish   |
| WHEELS          | 19" Style 5103, Diamond Turned with Gloss Black contrast |
| BRAKE OPTIONS   | Unpainted brake calipers                                 |
| TYRES           | Summer tyres   |
| ROOF OPTION     | Sliding panoramic roof                                   |
| GLASS           | Standard glass   |
| HEADLIGHTS      | Premium LED headlights with signature DRL                |



EXTERIOR COLOUR



WHEELS



ROOF OPTION



GLASS



HEADLIGHTS

# INTERIOR

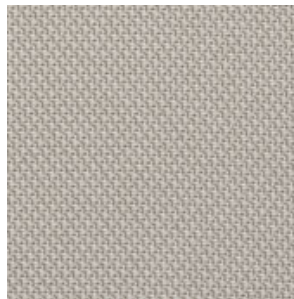


## INTERIOR FEATURES

|                 |   |
|-----------------|---|
| MATERIAL        | Perforated DuoLeather seats                                     |
| TRIM            | Caraway perforated DuoLeather seats with Ebony/Caraway interior |
| FRONT SEATING   | 12-way electric front seats with 2-way manual headrests         |
| HEADLINING      | Light Oyster Morzine headlining                                 |
| FINISHER        | Engineered Wood veneer  |
| MATERIAL        | Leather steering wheel  |
| STEERING COLUMN | Manually adjustable steering column                             |
| AUDIO           | Sound System  |
| DISPLAY         | Analogue Dials with Central TFT Display                         |



TRIM



HEADLINING



FINISHER



MATERIAL



STEERING  
COLUMN



AUDIO

# OPTIONS

## WHEEL OPTIONS

Reduced section steel spare wheel

Reduced section steel spare wheel with vehicle jack and wheel brace. Stored under loadspace floor.

---



# STANDARD FEATURES

## EXTERIOR FEATURES

|   |                              |  |
|---|------------------------------|--|
| Heated, electric, power fold door mirrors with approach lights and auto-dimming driver side | Variable intermittent wipers | Rain sensing windscreen wipers                           |
| Automatic headlights  | Green tinted glass           | Electric windows with one-touch open/close and anti-trap |
| Approach illumination   | Heated rear window           | Rear fog light(s)  |
| LED tail lights   | JAGUAR script and leaper     | F-PACE badge   |
| 355mm front and 325mm rear brakes   |                              |  |

## INTERIOR FEATURES

|   |   |   |
|---|---|---|
| Satin Chrome gearshift paddles                  | Four-zone Climate Control                           | Centre console with side storage          |
| Cabin lighting                                  | Start-up sequence with movement, dials and lighting | Glovebox finisher with Jaguar script      |
| Mist sensing                                    | Air distribution speed                              | Sunvisors with illuminated vanity mirrors |
| Auto-dimming interior rear view mirror          | Overhead lighting console                           | Shopping bag hook                         |
| Rear air vents                                  | Metal loadspace scuff plate                         | Metal treadplates with Jaguar script      |
| 40:20:40 folding rear seats with centre armrest | 3 rear headrests                                    | Rear metal treadplates                    |

## DYNAMICS

|  |                                     |                    |
|--|-------------------------------------|--------------------|
| Open Differential with Torque Vectoring by Braking | All Surface Progress Control (ASPC) | Hill Launch Assist |
|--|-------------------------------------|--------------------|

## DYNAMICS

|                                 |   |                                |
|---------------------------------|---|--------------------------------|
| JaguarDrive Control             | Electric Power Assisted Steering (EPAS) | Speed proportional steering    |
| Dynamic Stability Control (DSC) | Torque Vectoring by Braking (TVBB)      | Trailer Stability Assist (TSA) |
| ECO driving style assistant     |   |                                |

## INFOTAINMENT

|                        |                         |                        |
|------------------------|-------------------------|------------------------|
| Wireless Android Auto™ | Wireless Apple CarPlay® | Remote                 |
| Pivi Pro               | 11.4" Touchscreen       | Dynamic Volume Control |
| iPod® integration      | Bluetooth® connectivity | Bluetooth® streaming   |
| Voice control          |                         |                        |

## DRIVER ASSISTANCE

|                          |                  |                            |
|--------------------------|------------------|----------------------------|
| Emergency Braking        | Rear Camera      | Adaptive Cruise Control    |
| Driver Condition Monitor | Lane Keep Assist | Front and Rear Parking Aid |

## SAFETY & SECURITY

|                              |                          |                        |
|------------------------------|--------------------------|------------------------|
| Electric Parking Brake (EPB) | Brake pad wear indicator | Emergency Brake Assist |
|------------------------------|--------------------------|------------------------|

## SAFETY & SECURITY

|                                |  |  |
|--------------------------------|--|--|
| 3-flash lane change indicators | Interior front door handles with separate locking switches | Power operated child locks                           |
| Seat belt reminder             | Passive front head restraints                              | Rear ISOFIX  |
| Push Button Start              | Valet Mode   | Front airbags, with passenger seat occupant detector |
| Front side airbags             | Full length side window curtain airbag                     |  |

## CONVENIENCE

|                         |                             |                                |
|-------------------------|-----------------------------|--------------------------------|
| Powered tailgate        | Twin front cupholders       | Front door storage space       |
| Rear door storage space | Centre console with armrest | Luggage tie-downs in loadspace |
| Hook(s) in loadspace    | Outside temperature gauge   |                                |

# TECHNICAL SPECIFICATIONS

## PERFORMANCE

|  |           |
|--|-----------|
| Maximum speed km/h (mph)                 | 217 (135) |
| Acceleration (secs) 0-100 km/h (0-60mph) | 7,3 (6,9) |

## FUEL ECONOMY

|   |                            |
|---|----------------------------|
| Combined NEDC Equivalent (NEDC2) Consumption - l/100km (mpg)      | 7,7 (36,7)†                |
| Combined NEDC Equivalent (NEDC2) CO <sub>2</sub> Emissions - g/km | 174†                       |
| Combined WLTP Consumption - l/100km (mpg)                         | 9,2 - 10,1 (30,7 - 28,0)†† |
| Combined WLTP CO <sub>2</sub> Emissions - g/km                    | 208 - 228††                |
| Combined NEDC Equivalent (NEDC2) - EV Range km (miles)            | -                          |
| Combined WLTP EV Range km (miles)                                 | -                          |
| Tank capacity (litres approx.)                                    | 83                         |

## POWERTRAIN

|                           |                     |
|---------------------------|---------------------|
| Capacity (cc)             | 1.997               |
| Maximum power (PS/kW/rpm) | 250 / 184 / 5.500   |
| Maximum torque (Nm/rpm)   | 365 / 1.300 - 4.500 |
| Transmission              | 8 - speed automatic |

## WEIGHTS

|                                 |         |
|---------------------------------|---------|
| Unladen weight (EU) (kg)        | 1.897 △ |
| Unladen weight (DIN) (kg)       | 1.822 ▲ |
| Gross Vehicle Weight (GVW) (kg) | 2.520   |

## TOWING

|  |       |
|--|-------|
| Unbraked trailer (kg)                              | 750   |
| Maximum towing (kg)                                | 2.400 |
| Maximum coupling point (nose weight) (kg)          | 100   |
| Maximum vehicle and trailer combination (GTW) (kg) | 4.920 |

## ROOF CARRYING

|   |    |
|---|----|
| Maximum roof load (including cross bars) (kg) | 75 |
|---|----|

## DIMENSIONS

|                                |         |
|--------------------------------|---------|
| Height (mm)                    | 1.664   |
| Length (mm)                    | 4.747   |
| Width with mirrors folded (mm) | 2.071   |
| Width with mirrors out (mm)    | 2.175   |
| Front wheel track (mm)         | 1.640,2 |

## DIMENSIONS

|                       |         |
|-----------------------|---------|
| Rear wheel track (mm) | 1.655,7 |
| Wheelbase (mm)        | 2.874   |

## HEADROOM

|   |             |
|---|-------------|
| Maximum front/rear headroom with standard roof (mm) | 1.007 / 977 |
| Maximum front/rear headroom with pano roof (mm)     | 960 / 952   |

## LEGROOM

|                                 |             |
|---------------------------------|-------------|
| Maximum front/rear legroom (mm) | 1.023 / 944 |
|---------------------------------|-------------|

## LOADSPACE CAPACITY

|  |        |
|--|--------|
| Height (mm)  | 751    |
| Width (mm)   | 1.091  |
| Width between arches (mm)                                | 1.048  |
| Length behind first row (mm)                             | 1.824  |
| Maximum loadspace volume behind first row - Dry (litres) | 1.440↔ |
| Maximum loadspace volume behind first row - Wet (litres) | 1.842◆ |

## LOADSPACE CAPACITY

|   |       |
|---|-------|
| Length behind second row (mm)                             | 1.005 |
| Maximum loadspace volume behind second row - Dry (litres) | 613↔  |
| Maximum loadspace volume behind second row - Wet (litres) | 793◆  |

## GROUND CLEARANCE

|                           |     |
|---------------------------|-----|
| Standard ride height (mm) | 213 |
|---------------------------|-----|

## TURNING CIRCLE

|                                   |       |
|-----------------------------------|-------|
| Kerb-to-kerb (m)                  | 11,95 |
| Wall-to-wall (m)                  | 12,39 |
| Turns lock-to-lock (no. of turns) | 2,52  |

## YOUR CONFIGURATION

[https://buildyour.jaguar.com/jag2/r/summary/\\_/en\\_xi/f-pace\\_k23/4a8gw/a-20p-250a\\_a-f-pace\\_a-suv\\_sp1/n-031uw\\_n-041cz\\_n-1ag\\_n-303sc](https://buildyour.jaguar.com/jag2/r/summary/_/en_xi/f-pace_k23/4a8gw/a-20p-250a_a-f-pace_a-suv_sp1/n-031uw_n-041cz_n-1ag_n-303sc)





†The figures provided are NEDC2 calculated from official manufacturer's WLTP tests in accordance with EU legislation with a fully charged battery. For comparison purposes only. Real world figures may differ. CO2, fuel economy, energy consumption and range figures may vary according to factors such as driving styles, environmental conditions, load, wheel fitment and accessories fitted. NEDC2 are figures calculated using a Government formula from WLTP figures equivalent to what they would have been under the old NEDC test. The correct tax treatment can then be applied.

## ††VIEW WLTP FIGURES

The figures provided are as a result of official manufacturer's tests in accordance with EU legislation with a fully charged battery. For comparison purposes only. Real world figures may differ. CO2, fuel economy, energy consumption and range figures may vary according to factors such as driving styles, environmental conditions, load, wheel fitment, accessories fitted, actual route and battery condition. Range figures are based upon production vehicle over a standardised route.

▽ When combined with electric motor.

△ Includes a 75kg driver, full fluids and 90% fuel.

▲ Includes full fluids and 90% fuel.

◇ Dry: Volume as measured with VDA-compliant solid blocks (200mm x 50mm x 100mm). Volume measured up to the headliner. Boot configuration and total loadspace will vary by vehicle specification (model and powertrain) and market, and if full size spare or space saver spare wheel is fitted.

◆ Wet: Volume as measured by simulating the loadspace filled with liquid. Volume measured up to the headliner. Boot configuration and total loadspace will vary by vehicle specification (model and powertrain) and market, and if full size spare or space saver spare wheel is fitted.

Weights reflect vehicles to standard specifications. Optional extras increase weight.

- [International Sites](#)
- [Sitemap](#)
- [Terms and Conditions](#)
- [Cookie and Privacy Policy](#)
- [Accessibility Statement](#)
- 

© Jaguar Land Rover Limited 2023: Registered office: Abbey Road, Whitley, Coventry CV3 4LF. Registered in England No: 1672070

**Important note on imagery & specification.** We are living through exceptional times. Due to the Covid pandemic we have been prevented or delayed in the creation of new images of current model years. Now the global impact of micro-chip shortages is further affecting build specifications, options and launch timings. Until this unique event settles, please note that **many images cannot be updated to 22/23 model year specifications.** Features, options, trim and colour schemes will differ from many images. Customers are urged to consult your local Retailer for detailed 22/23 model year specifications and do not base an order on marketing imagery and specification alone.

Jaguar Land Rover Limited is constantly seeking ways to improve the specification, design and production of its vehicles, parts and accessories and alterations take place continually, and we reserve the right to change without notice. Some features may vary between optional and standard for different model years. The information, specification, engines and colours on this website are based on European specification and may vary from market to market and are subject to change without notice. Some vehicles are shown with optional equipment and retailer-fit accessories that may not be available in all markets. Please contact your local retailer for local availability and prices.

[VIEW REGULATION \(EU\) 2020/740 PDF](#)

**JAGUAR**

<http://www.jaguar.com>